



P A N G E A

123, St. George's Road,
St. Julian's, Malta

MIZZI ESTATES
LIMITED

www.pangeamalta.com



Pan·gea

[*pan-jee-uh*]

A former “supercontinent” on the Earth. Millions of years ago a large landmass, Pangea, included all the present continents which broke up and drifted apart, creating the world as we know it today.



LEADING THE WAY IN REAL ESTATE

Breaking the mould for traditional concepts of work environments, PANGEA is the latest contemporary office block located in Malta's most electric district—St. Julian's. Leading the way forward in the commercial real estate revolution, Mizzi Estates designed the building with ultramodern features and interiors, prepped to house state-of-the-art technology. Taking work environments in Malta to the next level.

PANGEA HAS YOUR
WORK-LIFE BALANCE
COVERED

1

LOCATION



P A N G E A



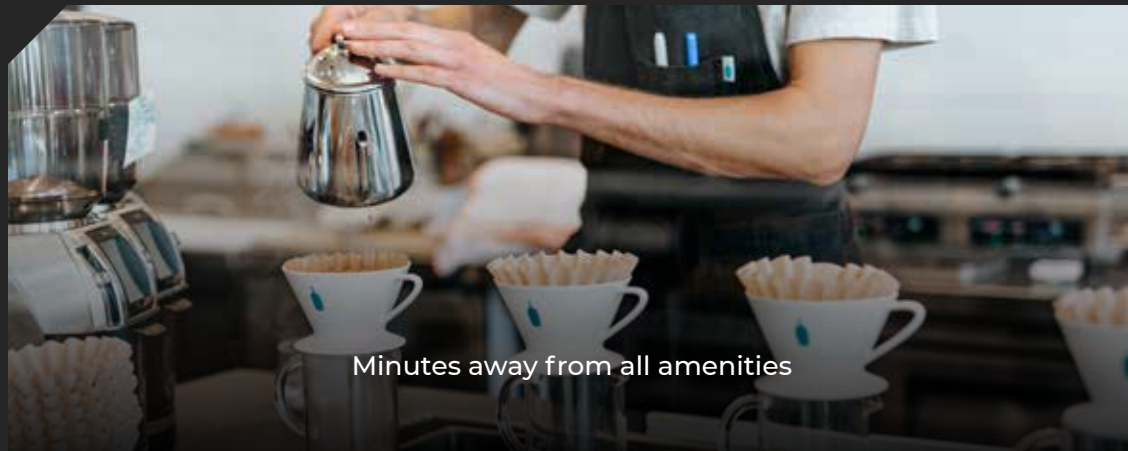
MALTA'S MOST ELECTRIC DISTRICT

Located in Paceville, St. Julian's, the area is a hub of activity boasting the island's top restaurants, bars, casinos, beaches, cinemas, entertainment and more recently, has proved a magnet to a variety of bright professionals, company headquarters and their workforces from around the world—an innovative and progressive workforce that has changed the face of Malta on a global scale.

PRIME OFFICE SPACE
IN AN UNRIVALLED
LOCATION



Walking distance
from prime renting localities



Minutes away from all amenities



Placed in a central part of
the St. Julian's and Paceville area



2 minutes from the bus stop and
5 minutes from the closest taxi stand



Within Malta's prime entertainment
and nightlife hub

2

FUNCTIONALITY



P A N G E A



THE WORKFORCE OF TOMORROW

The developers of PANGEA Offices wanted to create a dynamic environment that promotes dedication and innovation for both smaller and larger scale companies. The building focuses on the workforce of tomorrow, featuring the latest technology, interiors and amenities.

CONTINUALLY EVOLVING
TO THE NEEDS OF
THE MODERN WORKFORCE



Intelligent Lighting



Access Control System



Two OTIS Elevators



Two Stand-by / Back-Up
Generators



Structured Data Cabling



Video Intercom System



Server Room on every Floor



Storage Facilities



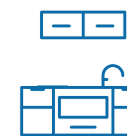
CCTV and Intruder Alarm
in all Common Areas



Fire Detection & Suppression
System per floor



Fully Air-conditioned
ensuring 50% redundancy



Kitchen on every
office Floor



3

INTERIORS AND LAYOUT PLANS

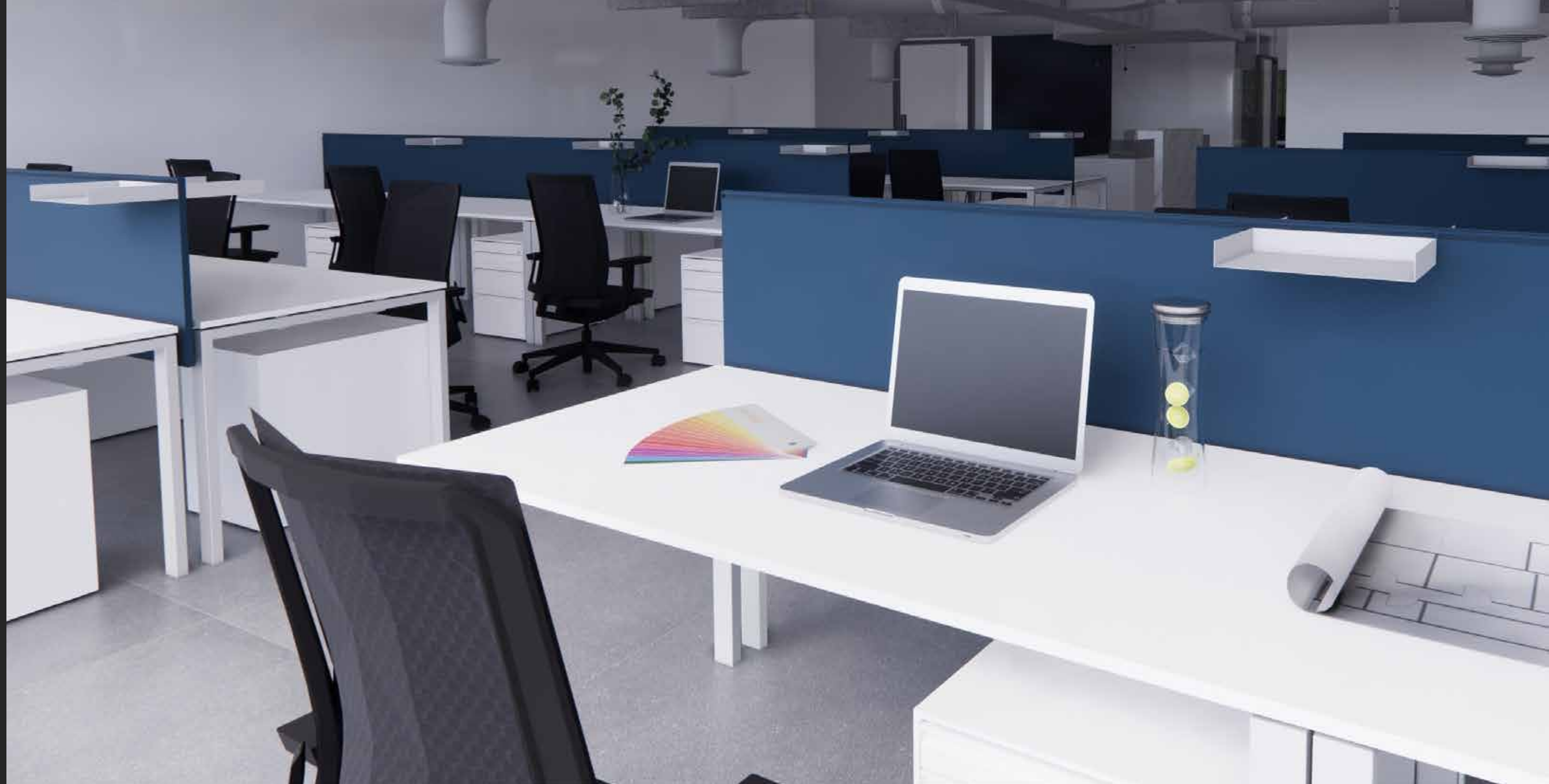


P A N G E A

Facade and entrance bar —



Optimised office spaces —



Fully-equipped kitchen —

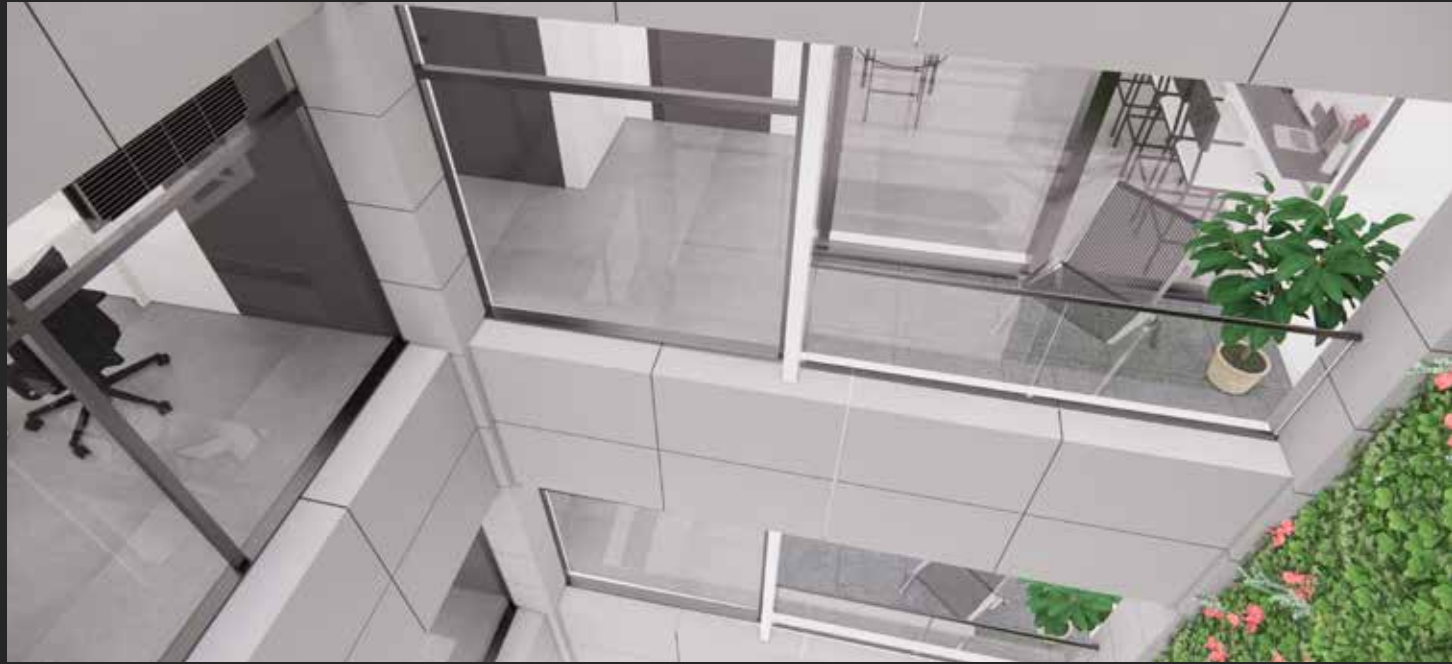




Two OTIS elevators and stairwell lobby —



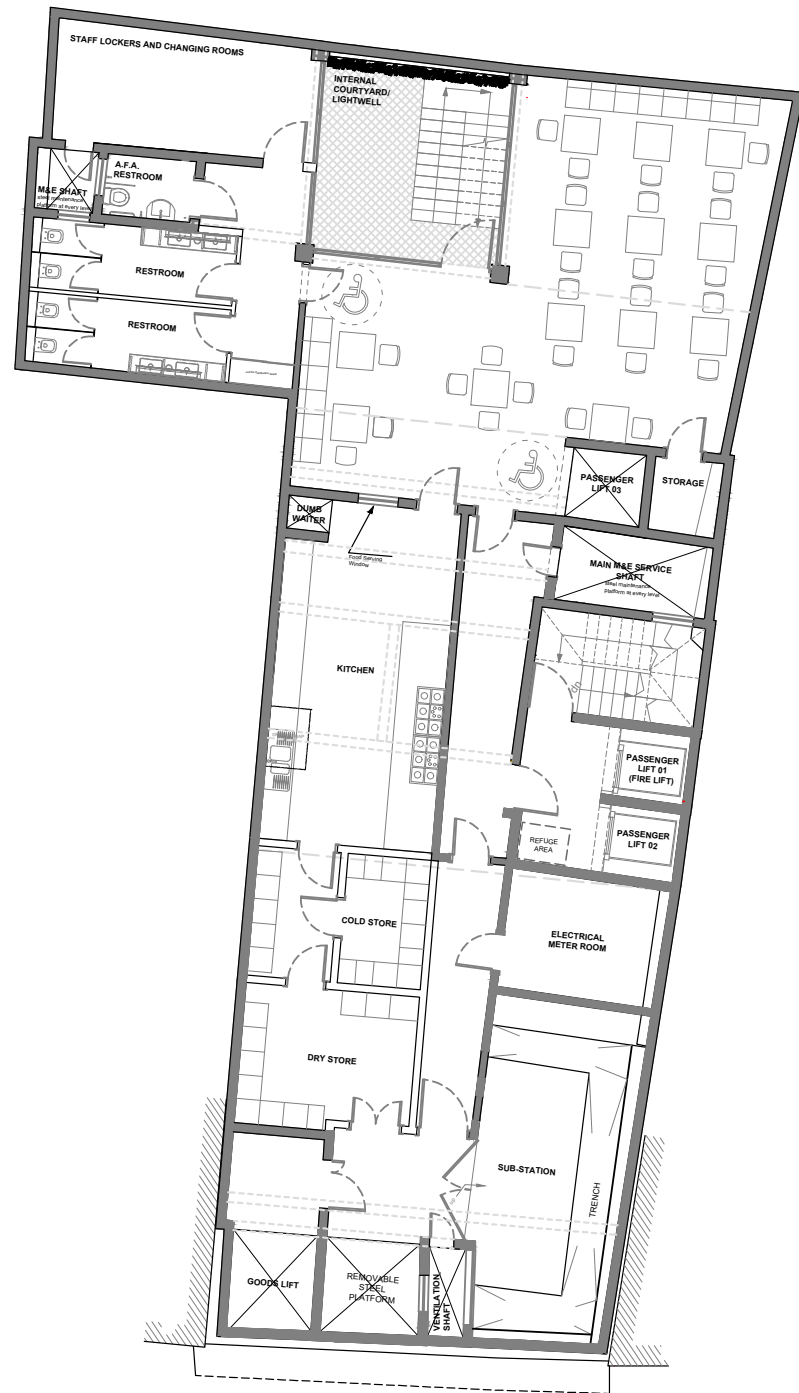




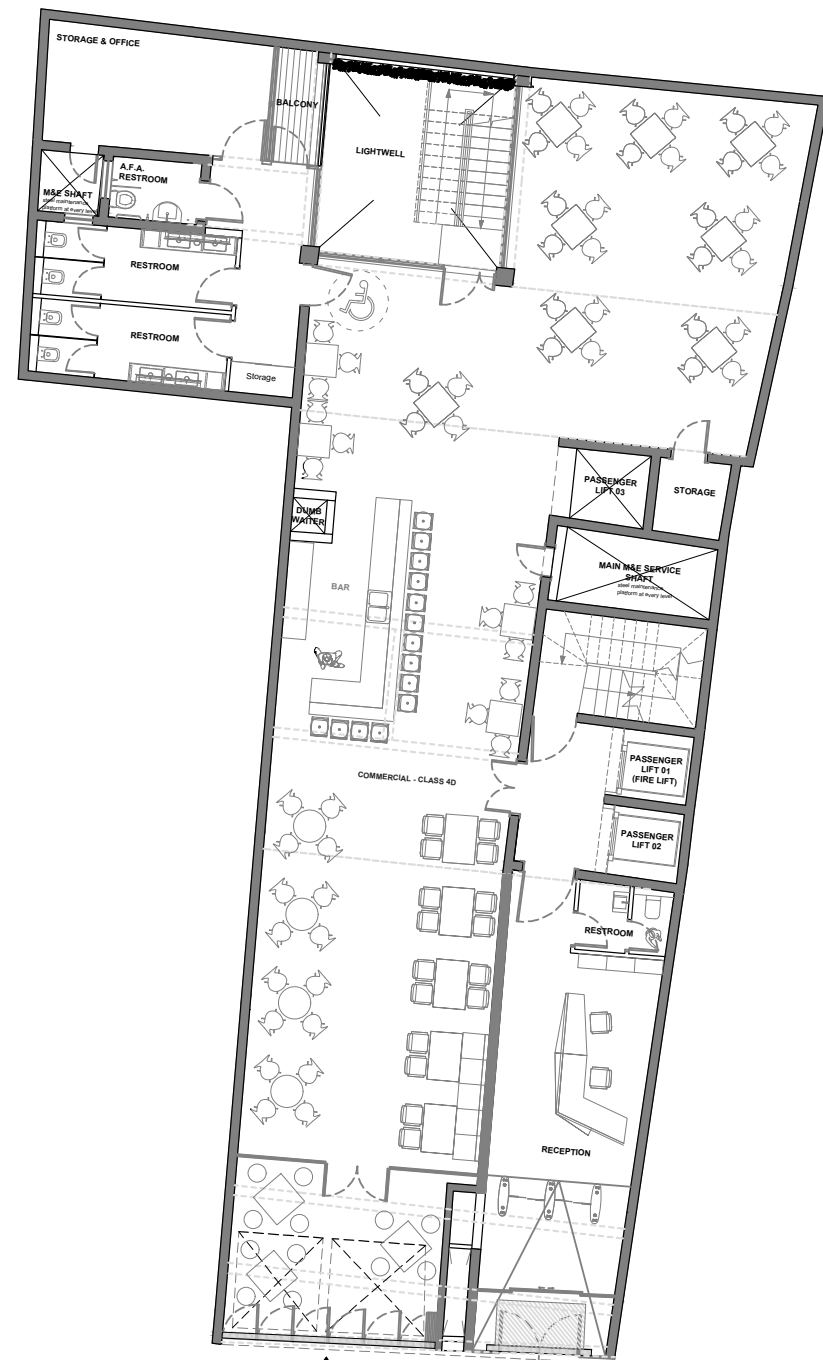
PANGEA



**BUILT WITHOUT
COMPROMISE
WITH QUALITY AS
A STANDARD**

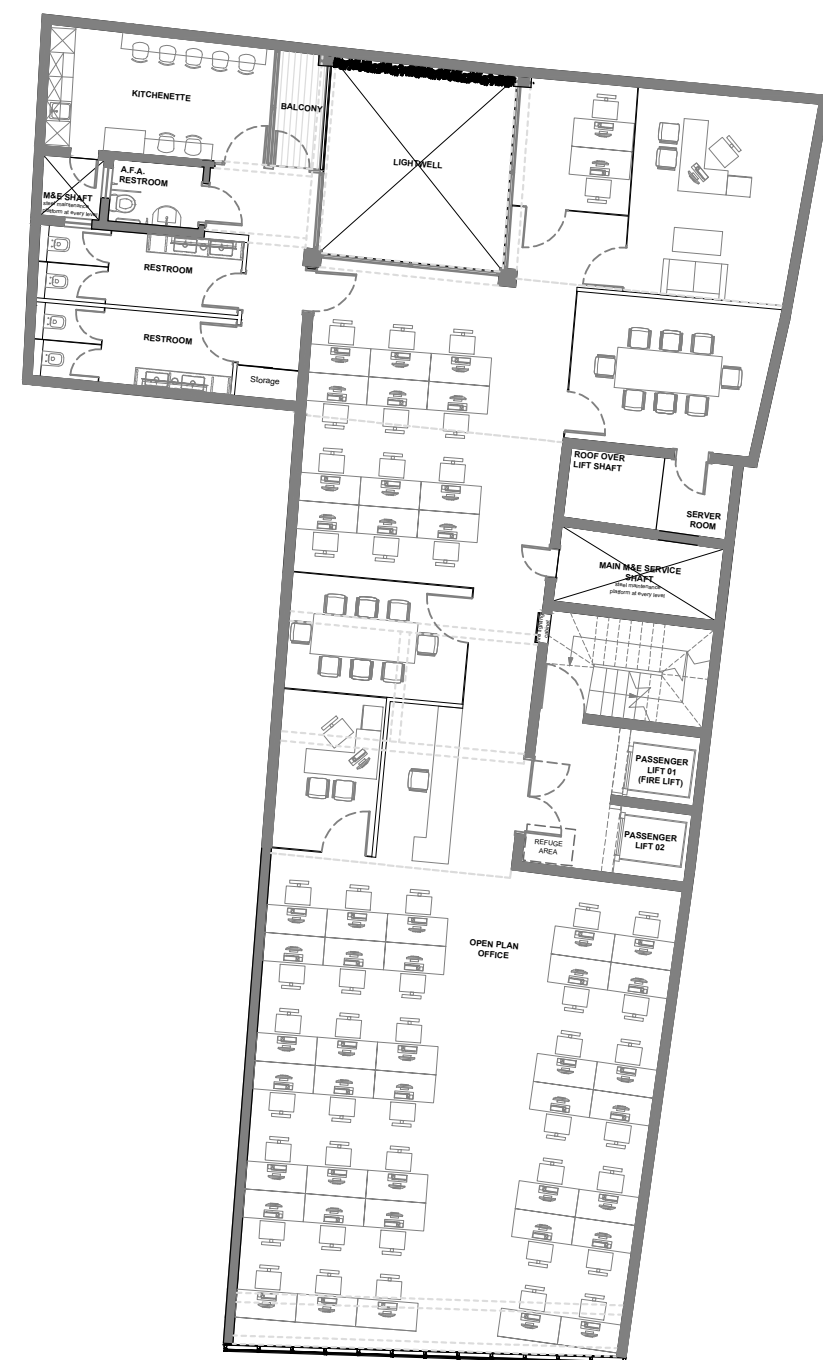


LEVEL -1



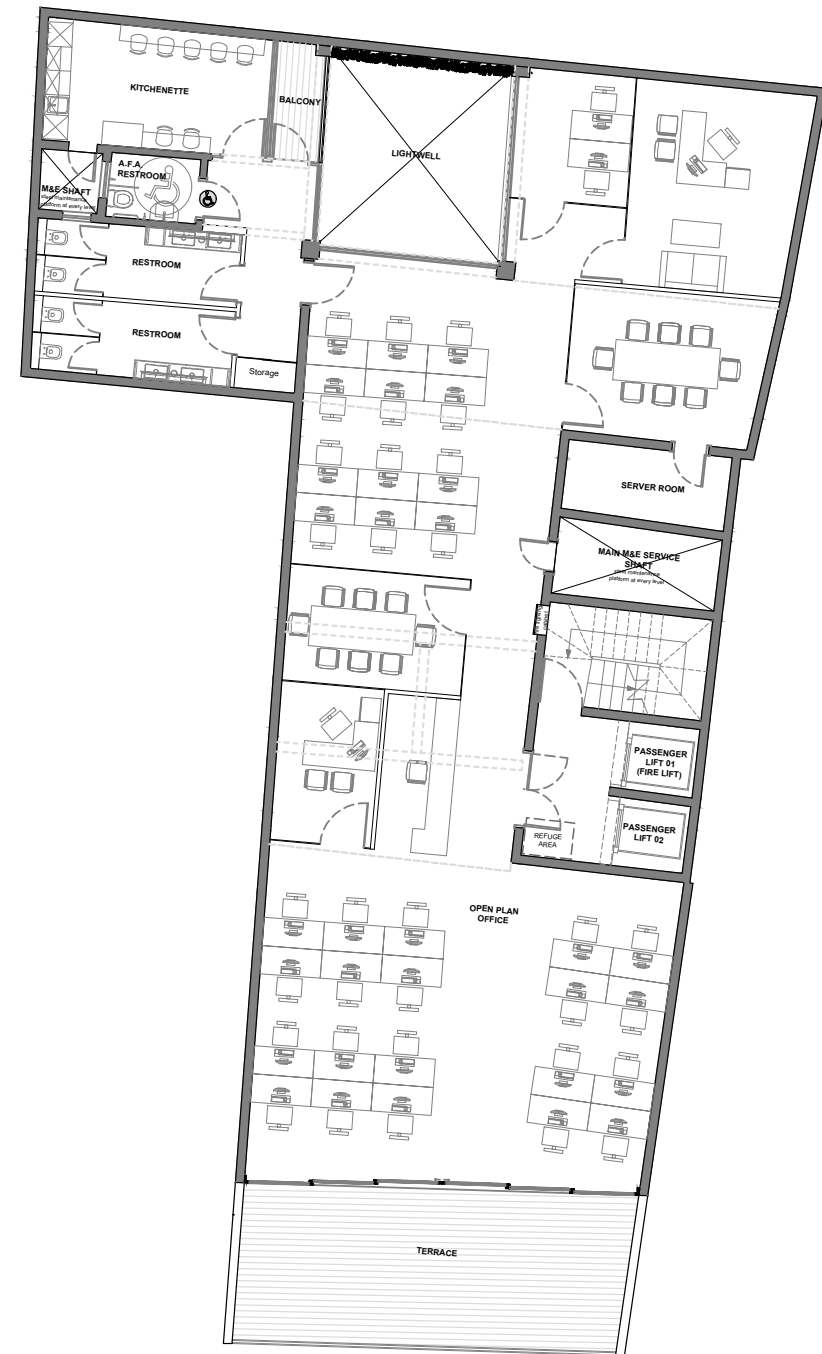
LEVEL 1

44



LEVEL 2-5

45



LEVEL 6

AREAS

Level -3 (Stores / Archiving)	240 sqmtrs
Level -2 (Stores / Archiving)	260 sqmtrs
Commercial / Office Level -1	245 sqmtrs
Commercial / Office Level 1 (Ground Floor)	270 sqmtrs
Office Levels 2 / 3 / 4 / 5	325 sqmtrs each (total 1300 sqmtrs)
Office Lev 6 (Receded Floor)	325 sqmtrs (including 40 sqmtr Terrace)

CONSTANTLY AND
EFFORTLESSLY **CONNECTED**

4

THE NEIGHBOURHOOD



P A N G E A



MALTA'S MOST EXCITING REGENERATION PROJECT

A prestigious business address is an asset to a thriving company, and what better address than directly opposite Malta's most exciting regeneration project, Mercury Towers. Designed by world-famous architect Zaha Hadid, the iconic new development is set to be the most exciting and diverse destination in Malta. From internationally renowned restaurants, an unrivalled shopping experience, outdoor art, live performances, an underground music hall, entertainment arena, luxury spa, chilled cafes, bustling bars, rooftop terraces and so much more—a working lunch will never be the same again.

READY TO
CREATE YOUR FUTURE?

CONTACT

+356 2596 9556

Mizzi Estates Limited

Mizzi Organisation Corporate Office,
Testaferrata Street, Ta' Xbiex, XBX 1407, Malta

pangeamalta@mizzi.com.mt

COMPANY FORMING PART OF

MIZZI
ORGANISATION
